

# CMA<sup>®</sup> CONTROLLED MORPHOLOGY ALUMINA

## Characteristics

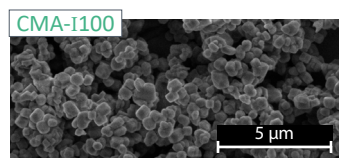
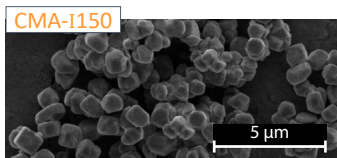
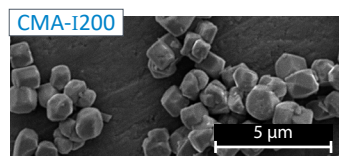
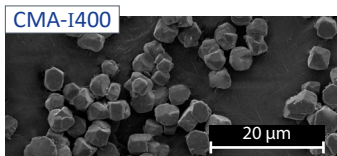
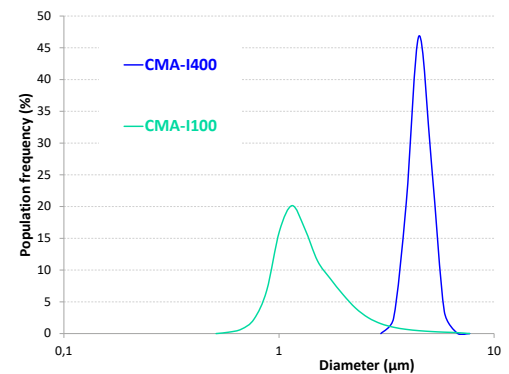
Standard CMA <sup>®</sup> products (Typical values)		CMA-I400	CMA-I200	CMA-I150	CMA-I100
Crystalline phase (%)		100% α			
Specific Surface Area (m <sup>2</sup> /g) BET		0.7	1.8	2.0	3.1
PSD (μm)	d <sub>50</sub>	4.0	2.0	1.5	1.0
Bulk Density (g/cm <sup>3</sup> )		1.0	0.7	0.6	0.6
Tapped Density (g/cm <sup>3</sup> )		1.9	1.3	1.2	1.0
Elemental Analysis (ppm) ICP	Na	14	14	14	14
	Si	350	250	150	150
	Fe	4.0	4.0	4.0	4.0
	Ca	40	40	44	42
	K	15	15	15	15

> CMA<sup>®</sup> Controlled Morphology Alumina characteristics include all the Baikalox<sup>®</sup> specifications, plus:

- Shape and Morphology control: **Icosahedral form**
- Monomodal distribution
- Range of mean particle size from 0.5 to 5μm
- High crystallinity
- Low viscosity



> Particle Size Distribution



## Applications

> CMA<sup>®</sup> range has a **high sintering reactivity at low temperature** thanks to its high tapped density, icosahedral form and its tight PSD.

It enables **maximized powder stacking** by reducing intergranular spaces.

Thus, **the porosity** of your ceramic parts and your coatings can be **well controlled**.



Baikowski<sup>®</sup> can also design CMA<sup>®</sup> upon request with other shapes, close to ideal structures:

- Spherical (CMA-S)
- Ellipsoidal (CMA-E)



Your solution partner for fine minerals



Baikowski® 

©BAIKOWSKI® A/2020/EN

**Baikowski® SA**  
France | Poisy | ☎ +33 4 50 22 69 02

**Mathym® SAS**  
France | Lyon | ☎ +33 4 78 83 72 93

**Baikowski® Malakoff Inc.**  
USA | Malakoff (TX) | ☎ +1 903-489-1910

**Baikowski® International Corp.**  
USA | Charlotte (NC) | ☎ +1 704-587-7100

[www.baikowski.com](http://www.baikowski.com)  
[sales@baikowski.com](mailto:sales@baikowski.com)



Follow us:    

**Sales Representative in China**  
China | Shanghai | ☎ +86 21.6289.2883

**Baikowski® Korea Co, Ltd.**  
Korea | Seoul | ☎ +82 255.281.97

**Baikowski® Japan Co, Ltd.**  
Japan | Chiba | ☎ +81 474.73.8150

The information and data contained in this document are based on tests believed to be reliable and are indicative only. They are given to demonstrate the typical values attached to every single product in the range, but should under no circumstance be considered as a formal commitment. Depending on the measurement methods and/or instrumentation, the results may vary from information provided herein. Baikowski® and its related companies (subsidiary and affiliated companies) are neither responsible nor liable for results obtained from the use of the products. Because of numerous factors affecting results, Baikowski® makes no warranty of any kind, express or implied, including those of merchantability and fitness for a particular purpose. Each purchaser must conduct its own testing for safety and regulatory evaluations. **Baikowski SA reserves the right to change the information given herein without prior notice.**